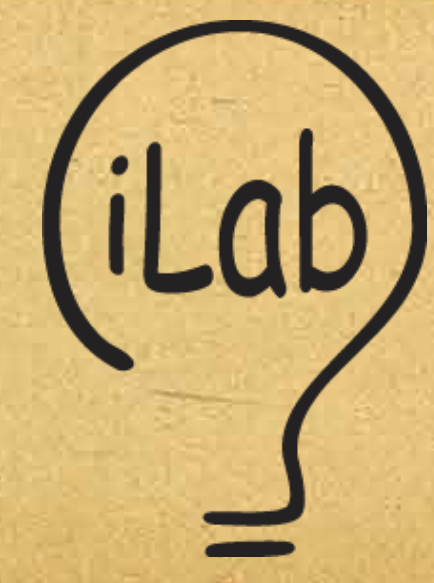


# SPALENDAR

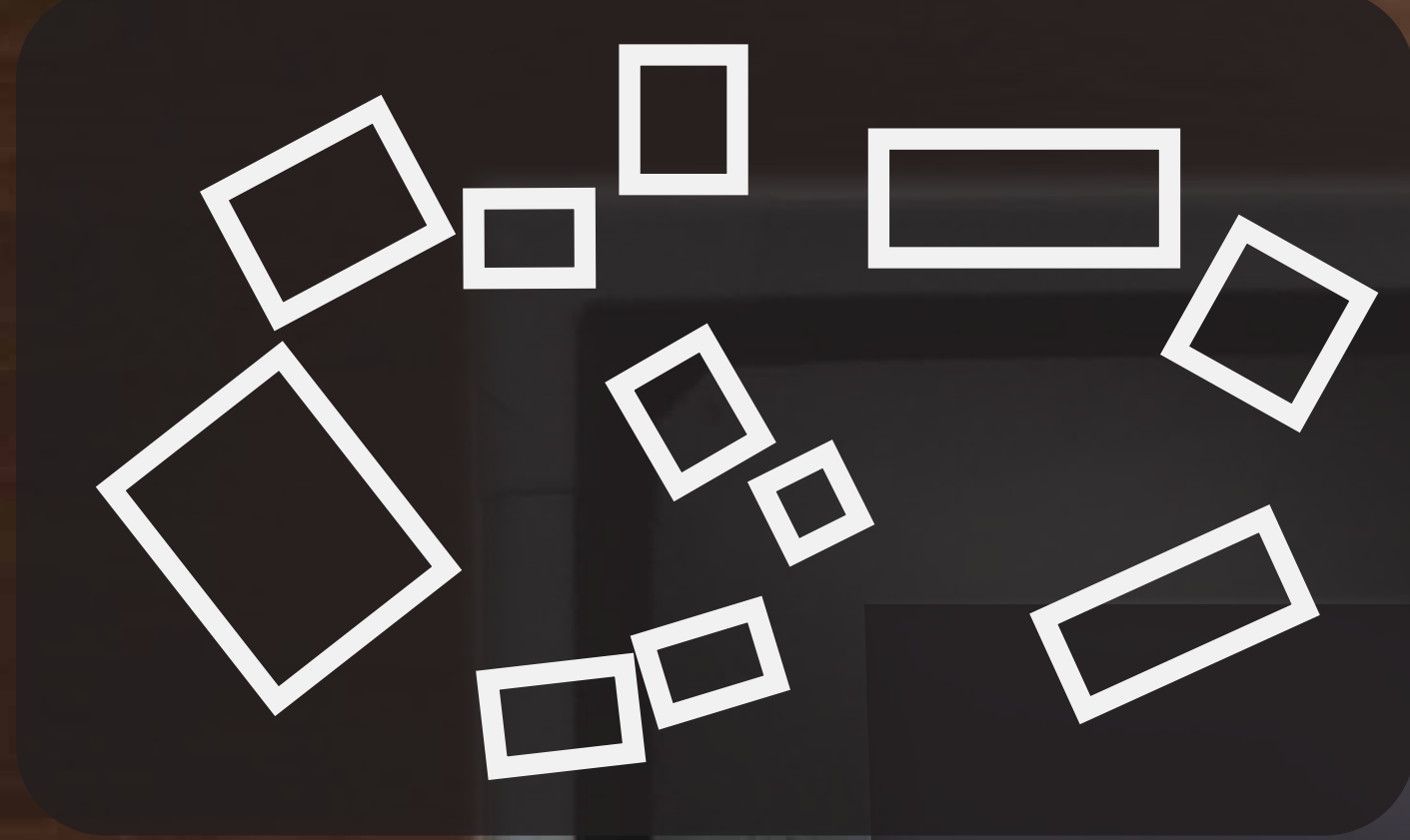
visualizing a group's calendar events over  
a geographic space on a public display

Xiang 'Anthony' Chen, Sheelagh Carpendale, Anthony Tang, Sebastian Boring, Saul Greenberg  
The Interactions Lab, University of Calgary



**SPALENDAR** presents a new way of visualizing a group's calendar events by showing people moving between their scheduled meetings and appointments located in their shared work space such as their lab, office, campus.

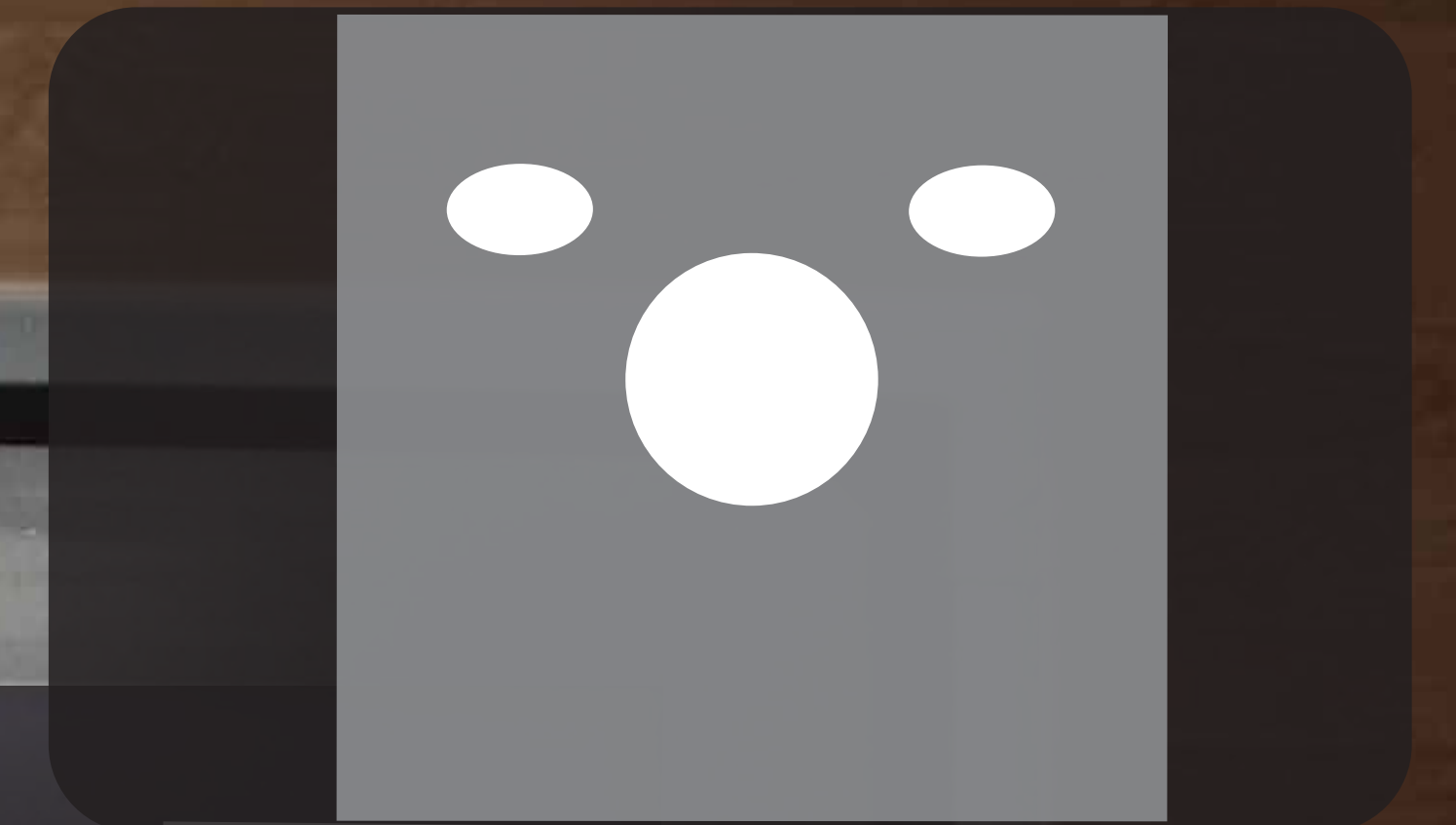
a schematic map of geographic space, e.g., campus buildings



moving dots show people going between events



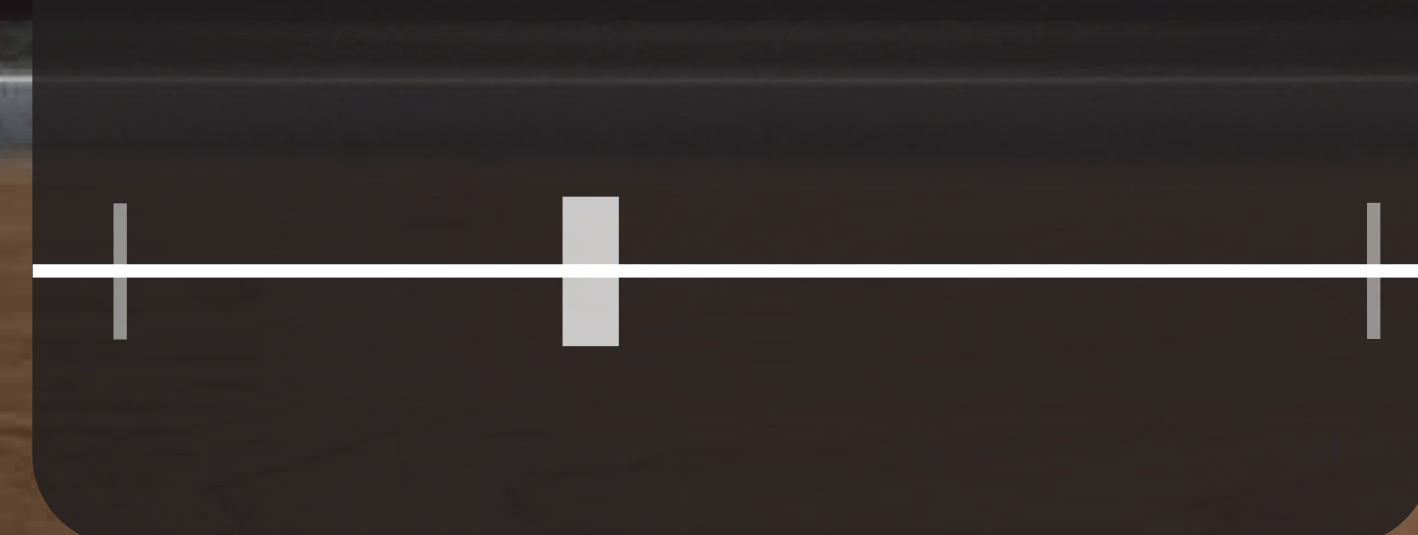
visualization of a viewer approaching the display



a bubble shows an event and groups the attendees



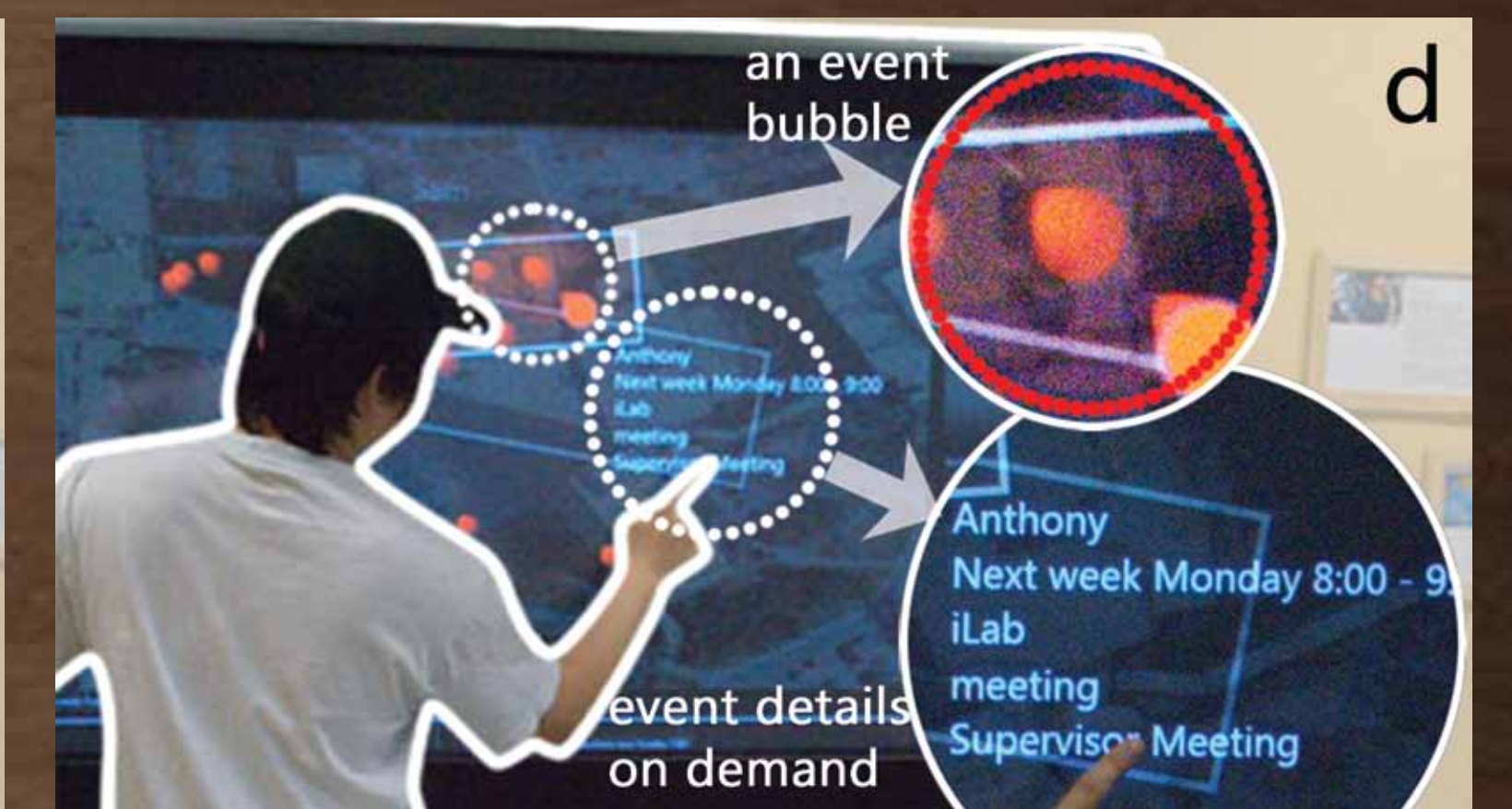
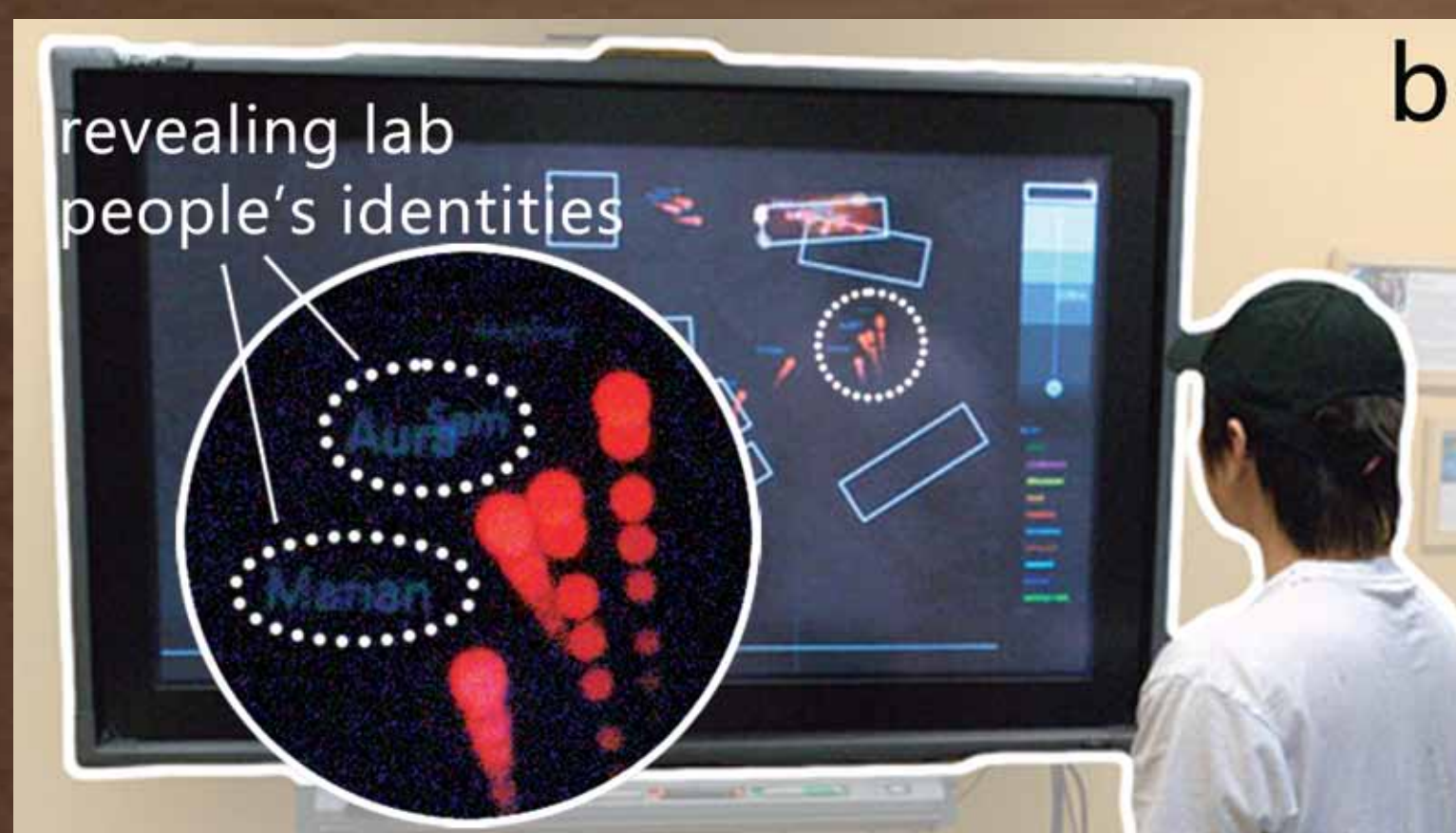
a timeline controls the date & time of the visualized events



colors represent event types, e.g., red is meeting



**SPALENDAR** reacts to how people approach it, by altering the information density and providing various interaction possibilities.



## SPALENDAR

encourages casual interactions between group members which go beyond a conventional calendar.



Discovery group activities from seeing people gather

Check your calendar while on-the-go



Create public events and invite the others

